

KOMATSU

PC
340



PC340LC-7

PC340LC-7 / PC340NLC-7

HYDRAULIC EXCAVATOR

NET HORSEPOWER

180kW / 242HP / 245PS

OPERATING WEIGHT

PC340LC-7: 32.960-33.910 kg

PC340NLC-7: 32.860-33.810 kg

BUCKET CAPACITY

0,60 m³ – 2,40 m³

WALK-AROUND

The PC340-7 is a rugged, productive, all-European machine. Designed and expressly built for European markets, it delivers productivity, reliability and operator comfort in a robust, environmentally-friendly package. Komatsu's exclusive, on-board, HydraMind system assists in all operations, providing enhanced machine performance that's always perfectly matched to the task.

What's new on Dash 7:

- Higher production
- Low fuel consumption
- Easier maintenance and serviceability
- Improved operator comfort
- Lower noise
- Meets stage II emission regulations
- Multi-function colour monitor
- Advanced attachment control

Advanced Attachment Control

The PC340-7 can be individually specified to handle a wide variety of attachments. The advanced attachment control system features:

- Operator selectable hydraulic flow control
- Adjustable pre-sets for rapid attachment changeover
- Additional filters and accumulators for attachment and machine protection
- Hydraulic relief pressure control
- Automatic changeover valves
- Attachment piping options

Heavy duty digging performance

Large bore cylinders are installed to the super short and short arms to greatly increase digging forces and productivity in tough conditions. The boom and arms have increased cross section to provide superb durability.

High productivity and low fuel consumption

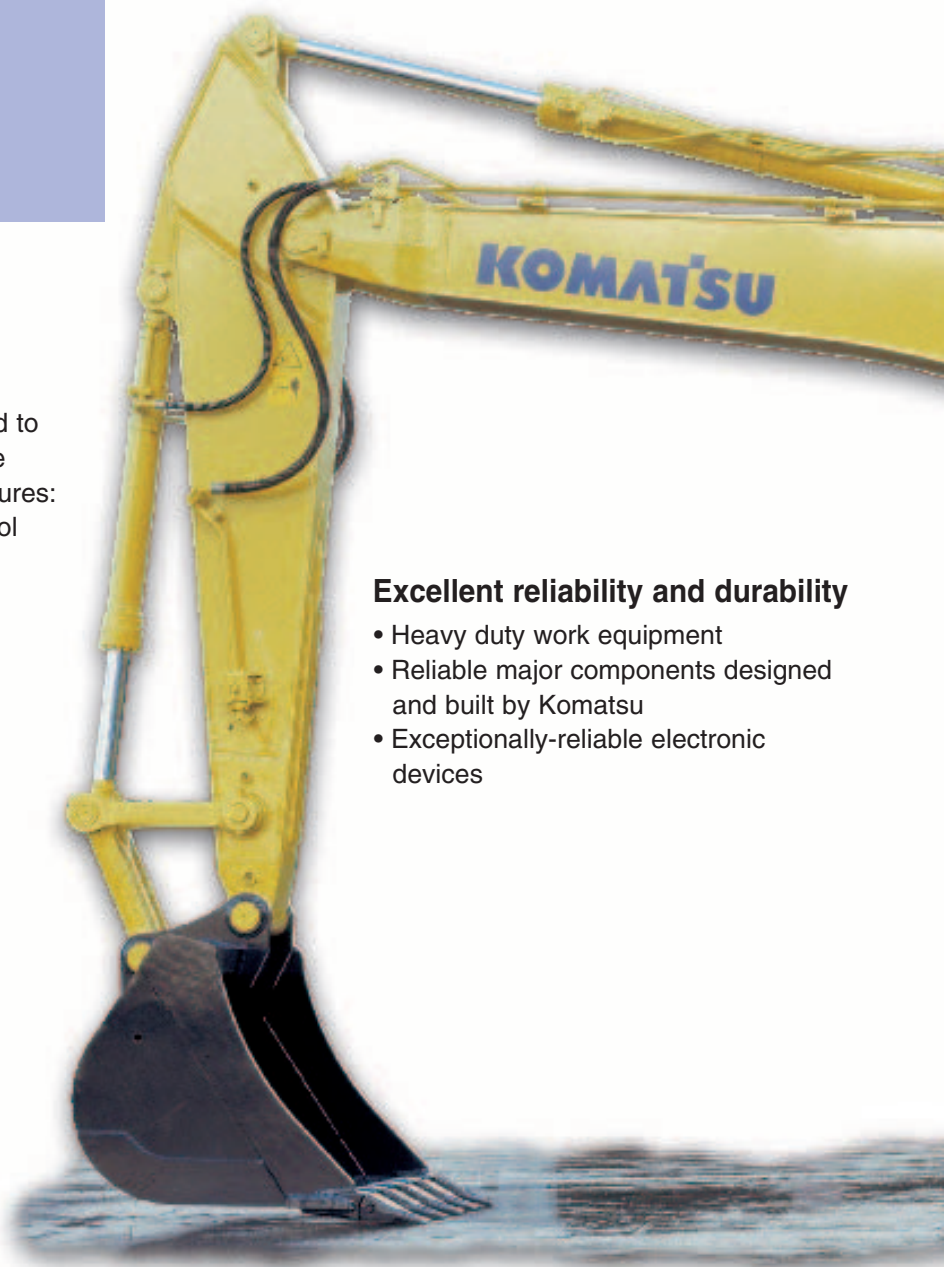
Productivity has increased with greater output in the 'Active' mode, while fuel efficiency has been further improved.

Excellent reliability and durability

- Heavy duty work equipment
- Reliable major components designed and built by Komatsu
- Exceptionally-reliable electronic devices

Higher lifting capacity

Lateral stability has been improved and the lifting capacity has increased.



NET HORSEPOWER

180kW / 242HP / 245PS

OPERATING WEIGHT

PC340LC-7: 32.960-33.910 kg

PC340NLC-7: 32.860-33.810 kg

BUCKET CAPACITY

0,60 m³ – 2,40 m³

Easy maintenance

- Extended replacement intervals for engine oil, engine oil filter and hydraulic filter.
- Remote-mounted engine oil filter and fuel drain valve, for easy access.
- Fitted as standard water separator.
- Easy clean radiator.
- Increased fuel tank capacity.
- SCSH (Steel Copper Sinter Hard material) bushings on work equipment extend the lubricating interval from 100 hours up to 500 hours.

In harmony with the environment

- The powerful turbocharged and air to air after-cooled Komatsu SAA6D114E-2 provides 180kW / 242 HP. This engine meets stage II emissions standards without sacrificing power or machine productivity.
- Economy mode for reduced fuel consumption.
- Low operating noise.
- Designed for easy end of life recycling.

SpaceCab™

The new PC340-7's cab space has been increased by 14%, offering an exceptionally-roomy operating environment.

- Sealed and pressurised cab with standard air conditioning fitted as standard.
- Low-noise design.
- Low-vibration design with damper mounted cab.
- OPG Level I (ISO) compliant cab.



EMMS

EMMS. (Equipment Management and Monitoring System)

The EMMS is a highly sophisticated system, controlling and monitoring all the excavator functions. The user interface is highly intuitive and provides the operator with easy access to a huge range of functions and operating information.

Four modes of operation

The PC340-7 is equipped with three working modes (A, E, B), plus a lifting mode (L). Each mode is designed to match the engine speed, pump speed, and system pressure to the operational requirement. This provides the flexibility to match equipment performance to the job at hand.

The diagram shows the EMMS interface on a handheld device. The top section is a color LCD screen displaying various gauges and warnings. The bottom section is a physical keypad with various function buttons. Numbered callouts (1-15) point to specific elements on both the screen and the keypad, which are detailed in the adjacent legend.

On-screen symbols

- 1 Operating mode
- 2 Service hours meter
- 3 Travel speed
- 4 Engine water gauge
- 5 Engine water temperature warning
- 6 Hydraulic oil gauge
- 7 Hydraulic oil temperature warning
- 8 Fuel level gauge
- 9 Fuel low level warning
- 10 Swing lock
- 11 Pre-heat
- 12 Continuous/intermittent window wiper
- 13 Auto deceleration
- 14 Power max.

Push-button controls

- 1 'Active' mode
- 2 'Economy' mode
- 3 'Lifting' mode
- 4 'Breaker' mode
- 5 Travel speed selector switch
- 6 Auto Deceleration
- 7 Window wiper
- 8 Window washer
- 9 Select (For attachment oil flow adjustment)
- 10 Maintenance mode
- 11 Screen brightness adjustment
- 12 Input (return)
- 13 Input (up)
- 14 Input (down)
- 15 Input (confirm)

On-screen symbols

- 1 Operating mode
- 2 Service hours meter
- 3 Travel speed
- 4 Engine water gauge
- 5 Engine water temperature warning
- 6 Hydraulic oil gauge
- 7 Hydraulic oil temperature warning
- 8 Fuel level gauge
- 9 Fuel low level warning
- 10 Swing lock
- 11 Pre-heat
- 12 Continuous/intermittent window wiper
- 13 Auto deceleration
- 14 Power max.

Push-button controls

- 1 'Active' mode
- 2 'Economy' mode
- 3 'Lifting' mode
- 4 'Breaker' mode
- 5 Travel speed selector switch
- 6 Auto Deceleration
- 7 Window wiper
- 8 Window washer
- 9 Select (For attachment oil flow adjustment)
- 10 Maintenance mode
- 11 Screen brightness adjustment
- 12 Input (return)
- 13 Input (up)
- 14 Input (down)
- 15 Input (confirm)

Active Mode

For maximum power and fast cycle times. Normally used for heavy operations such as hard digging and loading. This mode allows access to the 'Power Max' function to temporarily increase digging force by 7% for added power in tough situations.

Economy mode

The environmentally-friendly mode. Run more quietly during operations at night and/or in urban areas. Fuel consumption is reduced by 20% and NOx emissions are also reduced (when compared with 'Active' mode), and production is equal to the PC340-6's 'HO' mode.

Breaker mode

Delivers optimum hydraulic pressure, flow and engine RPMs for powerful breaker operations.

Lifting mode

Increases lifting capacity by 7% by raising the hydraulic pressure. This mode supports safe lifting operations.

Working Mode	Application	Advantage
A	Active mode	<ul style="list-style-type: none"> • Maximum production/power • Fast cycle times
E	Economy mode	<ul style="list-style-type: none"> • Excellent fuel economy
B	Breaker mode	<ul style="list-style-type: none"> • Optimum engine rpm and hydraulic flow
L	Lifting mode	<ul style="list-style-type: none"> • Hydraulic pressure is increased by 7%



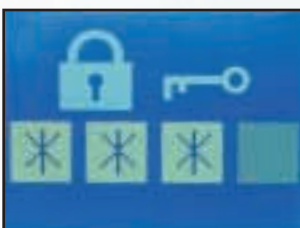
Hydraulic flow preset selection screen in B (Breaker) mode



Hydraulic flow fine adjustment screen in B (breaker) mode.



Hydraulic flow fine adjustment screen in A (Active) or E (economy) mode.



Password screen

Easy to see and easy to use

Superb recognition colour LCD screens for each mode. Letters and numbers are combined with colour images for exceptionally clear and easy to read information. The high-resolution screen is easy to read in all lighting conditions, including bright sunlight.

Automatic three-speed travel

Travel speed automatically shifts from high to low speed, according to the ground conditions.

	High	Mid	Low
Travel Speed	5,5 km/h	4,5 km/h	3,2 km/h

Fingertip hydraulic pump oil flow adjustment

From the LCD monitor, automatically select optimal hydraulic pump oil flow for breaking, crushing, and other operations in the B, A or E modes. Also, when simultaneously operating with attachments and work equipment, the flow to the attachment is reduced automatically, thus delivering smooth movement of the work equipment.

Password protection

Prevent unauthorized machine use or transport. The engine cannot be started without your four-digit use or password. For total security, the battery is connected directly to the starter motor, both the starter and engine need the password. The password can be activated upon request.

WORKING ENVIRONMENT

PC340-7's cab interior is spacious and provides a comfortable working environment...

SpaceCab™

Comfortable cab

The new PC340-7 inner cab volume is 14% greater than -6, offering an exceptionally-comfortable operating environment. The large cab enables the seat, with headrest, to be reclined horizontal.

Pressurised cab

Fitted as standard, the air conditioner, air filter and a higher internal air pressure minimises dust entry into the cab.

Low-noise design

Noise levels are substantially reduced; engine noise as well as swing and hydraulics operations noise.

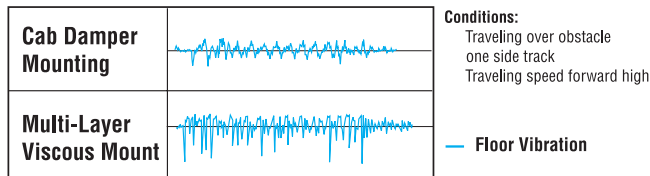
Cab damper mounting for low vibration levels

PC340-7 is fitted with a new and improved viscous damping cab mount system that incorporates a longer stroke plus an added spring. The new cab damper mounting, combined with heavy duty left and right-side decks, aids the reduction of vibrations to the operator's seat.

Vibrations at the floor level are reduced from 120 dB (VL) to 115 dB (VL).

dB (VL) is an index of vibration level. As it increases, vibration increases and operator comfort is reduced.

Comparison of Riding Comfort

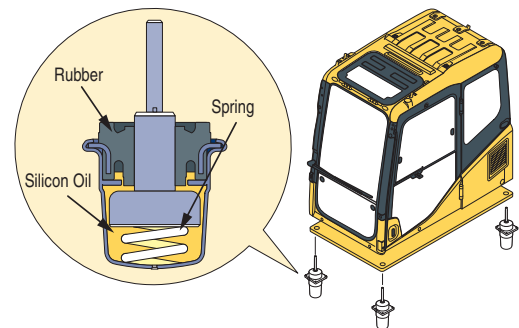


Vertical pitch direction on graph shows intensity of vibration.



Outer air filter

Easy removal/installation of air conditioner filter element, without tools facilitates easier cleaning.



Roof hatch



12-volt power supply and (optional) radio cassette



Climate control



Bottle holder and magazine rack

Multi-position controls

The multi-position, proportional pressure control levers allow the operator to work in comfort whilst maintaining precise control. A double-slide mechanism allows the seat and controllers to move together, or independently, allowing the operator to position the controllers for maximum productivity and comfort.



Hot & cool box



3 button lever



Seat sliding range:
340 mm - increased by
120 mm over dash 6



Defroster/demister

Safety Features

Improved, wide visibility

The new design SpaceCab has no right side window pillar and the rear pillar reshaped to provide greater visibility. Blind spots have been decreased by 34% over dash 6 design.

Pump/engine room partition

Prevents hydraulic oil from spraying onto the engine to reduce the risk of fire.

Thermal and fan guards

Placed around high-temperature parts of the engine. The fan belt and pulleys are well protected.

Steps with non-skid surface and large handrail

Steps with non-slip surfacing ensure safer maintenance.

Thermal guard



Non slip sheet



Large handrail for safe access



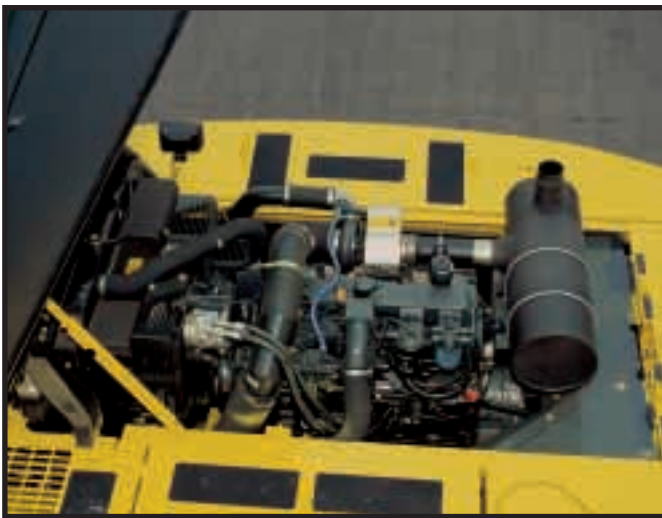
PRODUCTIVITY FEATURES

High production levels and low fuel consumption

The increased output and fuel savings of the Komatsu SAA6D114E-2 engine result in increased productivity. (tonne per litre of fuel)

Engine

The PC340-7 gets its exceptional power and work capacity from a Komatsu SAA6D114E-2 engine. Output is 180 kW / 242 HP, providing increased hydraulic power and improved fuel efficiency.



Hydraulics

The unique two-pump system ensures smooth, simultaneous movement of the work equipment. Komatsu's exclusive HydraulMind system controls both of the pumps for most-efficient use of engine power. The system also reduces hydraulic loss during operations. Additional hydraulic circuits may be ordered.



Larger drawbar pull

PC340-7 's maximum drawbar pull has been increased by 17% over -6, providing superb steering and slope climbing capability. Maximum drawbar pull: 26.900kg

Increased arm crowd force and digging force for increased production.

Large bore cylinders are installed to the super short and short arms to greatly increase digging forces and productivity in tough conditions. Arm crowd force is increased 17% and bucket digging force is increased 22% when the Power Max function is applied. (Compared to PC340-6)

Bucket digging force*: 227 kN 23.100 kg

Arm crowd force*: 171 kN 17.400 kg

* Measured with Power Max function, 3.190mm arm and ISO rating

The boom and arms are heavy duty design to provide superb durability.

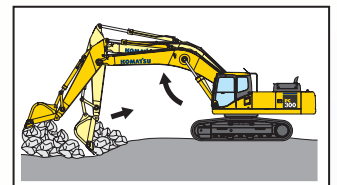


Heavy duty arm

Two-mode boom control

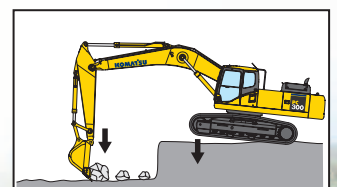
Smooth mode provides easy operation for gathering blasted rock or scraping down operations. When maximum digging force is needed, switch to Power mode for more effective excavating.

Boom floats upward, reducing lifting of machine front. This facilitates gathering blasted rock and scraping down operations.



Smooth mode

Boom pushing force is increased, ditch digging and box digging operation on hard ground are improved.



Power mode

Excellent reliability and durability

Reliable components

All of the major machine components, such as engine, hydraulic pump, hydraulic motor and control valves, are designed and manufactured by Komatsu. This guarantees that each component is expressly built for the class and model of machine. This ensures that the engineering, manufacturing standards and testing that go into each component are 'totally-Komatsu'.

Highly-rigid, robust work equipment

The strengthened boom and arm have large cross-sectional dimensions as well as continuous two-sided groove welding, improving the digging and side-contact strengths.

Sturdy frame structure

The revolving frame, centre frame and undercarriage have been designed using the most advanced three-dimensional computer aided design (CAD) and FEM (Finite Elements Modelling) analysis technology.

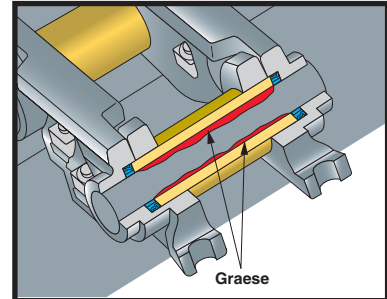
Highly-reliable electronic devices

Exclusively-designed electronic devices are certified by severe testing.

- Controller
- Sensors
- Connectors
- Heat-resistant wiring

Metal guard rings

Protect all hydraulic cylinders and improve reliability.



Grease-sealed track provides excellent undercarriage durability



Track Link with Strut
The PC340-7 uses track links with strut, providing superb durability

Harmony with the environment

Low-emission engine

Komatsu SAA6D114E-2 is stage II compliant, with 30% reduced NOx emissions (compared to PC340-6).

Low noise

Noise is reduced from the engine as well as from swing and hydraulic operations. The dynamic noise level is just 106 Lwa and 75 Lpa

Economy (environment) mode

'Economy' mode meets the needs of the 21st century.

This mode offers the user fuel savings, quiet operation, and less CO2 emissions.

- Fuel consumption is reduced by 20% (compared to the 'Active' mode).
- Economy mode production is the same as PC340-6's 'Heavy-Duty' mode.

End of life recycling

PC340-7 is designed with consideration of end of life recycling, effectively reducing its environmental impact.

- All exterior parts are made of steel.
- Extended engine oil, hydraulic oil and filter replacement intervals reduce environmental impact.
- All plastic parts are given a material code symbol.

VHMS

VHMS (Vehicle Health Monitoring System)

VHMS's precise health-check system indicates all of the machine's running conditions. At the beginning of, and during, each working shift, machine functions and abnormalities can be checked from the operator's seat.

New features: VHMS Machine health monitoring

- Up to four different mechanical system measurements can be monitored at the same time
- A "Maintenance Indicator" function has been added. (Filter and oil replacement time display function)
- Mechanical system failures are now monitored, in addition to electrical system failures.
- Failures are indicated by a 6-digit failure code

Displays running conditions and abnormality indications

At the operator's fingertips: the VHMS controller monitors engine oil level, cooling water level, fuel level, engine water temperature, engine oil pressure, battery charging level, air filter clogging, and more. The monitor also indicates whenever abnormalities are detected.

Maintenance alert assistance

The VHMS monitor alerts when oil and filters need to be replaced.

Operation data memory

The system memorises machine operating data such as engine output, hydraulic pressure, and more.

Trouble data memory

The monitor stores and recalls electrical system and mechanical system failures and abnormalities for effective troubleshooting. Twenty most-recent electrical system failures are stored. Mechanical system failures cannot be erased, ensuring accurate documentation of vital service management information.

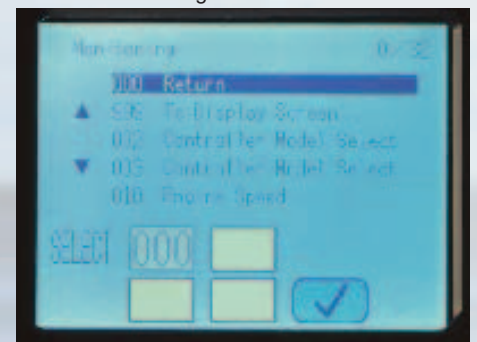
VHMS 'real time monitoring system'

The 'real time monitoring system' displays up to four different operating parameters simultaneously, giving the mechanic a total overview for faster troubleshooting. Parameters include operating conditions such as hydraulic oil pressure, engine RPM, different voltages, current and even temperature measurement.

Backlight switched on



Backlight switched off



Real time monitoring

Reducing maintenance costs

Extended interval for hydraulic oil and filter/engine oil and filter replacements

New, high-performance filters are used in the hydraulic circuit and engine. Replacement intervals for hydraulic oil-filter, engine oil, and engine oil filter elements are significantly extended, reducing maintenance costs.

Comparison of replacement intervals model: unit: hours

	PC340-7	PC340-6
Engine oil	500	250
Engine oil filter	500	250
Hydraulic oil	5.000	5.000
Hydraulic oil filter	1.000	500

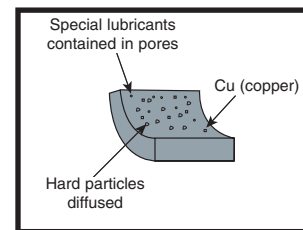
Fuel tank capacity increased

The fuel tank capacity has increased from 540 litres to 605 litres to extend the operating hours before refuelling. The fuel tank is treated for rust prevention for improved corrosion resistance.

With SCSH (Steel Copper Sinter Hard material) bushings, all work equipment lubrication intervals are extended to 500 hours

Newly-developed SCSH bushings are used on the bucket arm top bushing; the end faces are injected with tungsten carbide. All work equipment bushing lubrication intervals are extended from 100 hours to 500 hours, reducing maintenance costs.

(Available for bucket pin, depending on bucket design)



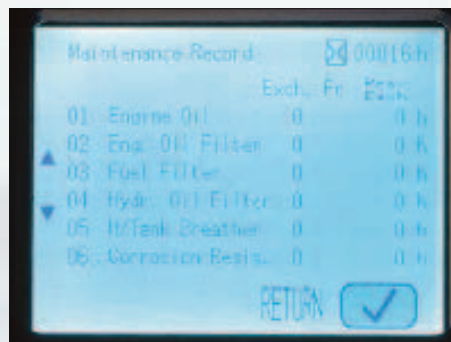
SCSH bushing

Tungsten carbide-injected bushing

Tungsten carbide is injected into the end faces of the arm-top bushing to form a hard film. This reduces the wear of contacting surfaces and fluttering of the bucket.



Trouble data memory



Maintenance record



Maintenance mode change

MAINTENANCE FEATURES

Easy maintenance

Komatsu designed the PC340-7 to have easy service access. By doing this, routine maintenance and servicing are less likely to be skipped. This can mean a reduction in costly downtime later on. Here are some of the many service features found on the PC340-7.

Easy radiator cleaning

Clearance between radiator and oil cooler is increased to facilitate radiator core cleaning with an air nozzle.



Water separator

Standard equipment which removes any water that has become mixed with the fuel, preventing fuel system damage.



Easy access to engine oil filter and fuel drain valve

Engine oil filter and fuel drain valve are remotely mounted to improve accessibility.



Auto greasing (optional)

A factory-installed Central Lubricating System (CLS) ensures proper lubrication and saves driver maintenance downtime. Factory installation includes welding protective, heavy-duty line shielding onto the dipper arm during the manufacturing process, before painting. The Central Lubrication system use reinforced hoses to carry the lubricant to all of the lubrication points, and is governed by several distribution blocks. Lubrication cycles may be adjusted at operator's preference.



Fuel supply pump



SPECIFICATIONS



ENGINE

Type6 cylinder, direct injection, emissionised, turbocharged, after-cooled diesel.
 ModelKomatsu SAA6D114E-2
 Power rating
 ISO 9249 (Net)180kW (242HP/ 245PS) at 1.900 rpm
 Bore x stroke114mm x 135mm
 Piston displacement8,27 Ltr
 Air-cleaner and cooling Double element type with monitor panel dust indicator and auto dust evacuator.
 Suction type cooling fan with radiator fly screen.



ELECTRICAL SYSTEM

Alternator24 Volt - 60 ampere
 Batteries2 x 12 Volt - 140 Ah
 Starter motor24 Volt - 11 kW



HYDRAULIC SYSTEM

TypeHydrauMind. Closed-centre system with load sensing and pressure compensation valves.
 Additional circuits Depending on specification up to 2 additional circuits can be installed.
 Main pump2 variable displacement piston pumps supplying boom, arm, bucket, swing and travel circuits.
 Maximum pump flow2 x 268 Ltr/min
 Relief valve settings
 Implement380 kg/cm2
 Travel380 kg/cm2
 Swing285 kg/cm2
 Pilot circuit33 kg/cm2



ENVIRONMENT

Engine emissions Fully complies with stage 2 exhaust emission regulations.
 Noise levels LWA External noise 106dB(A) (2000/14/EC)
 LPA Operator ear noise 75dB(A) (2000/14/EC)



OPERATION WEIGHT (APPROXIMATE)

aOperating weight, including 6.470 mm one-piece boom, 3,2 m arm, 971kg bucket, operator, lubricant, coolant, full fuel tank and the standard equipment.



SWING SYSTEM

TypeAxial piston motor driving through planetary double reduction gearbox.
 Swing lockElectrically actuated wet multi-disc brake integrated into swing motor.
 Swing speed0 to 9,5 rpm.



DRIVES AND BRAKES

Steering control2 levers with pedals giving full independent control of each track.
 Drive method Hydrostatic.
 Travel operation Automatic 3-speed selection
 Gradeability 70%, 35°
 Travel speeds Lo / Mi / Hi 3,2 / 4,5 / 5,5 km/h
 Maximum drawbar pull 26.900 kg
 Brake system Hydraulically operated discs in each travel motor.



UNDERCARRIAGE

Construction X-frame centre section with box section track-frames
 Track assembly
 Type Fully sealed.
 Shoes (each side) 48 (PC340LC, PC340NLC)
 Tension Combined spring and hydraulic unit
 Rollers
 Track rollers (each side) 8 (PC340LC, PC340NLC)
 Carrier rollers (each side) 2



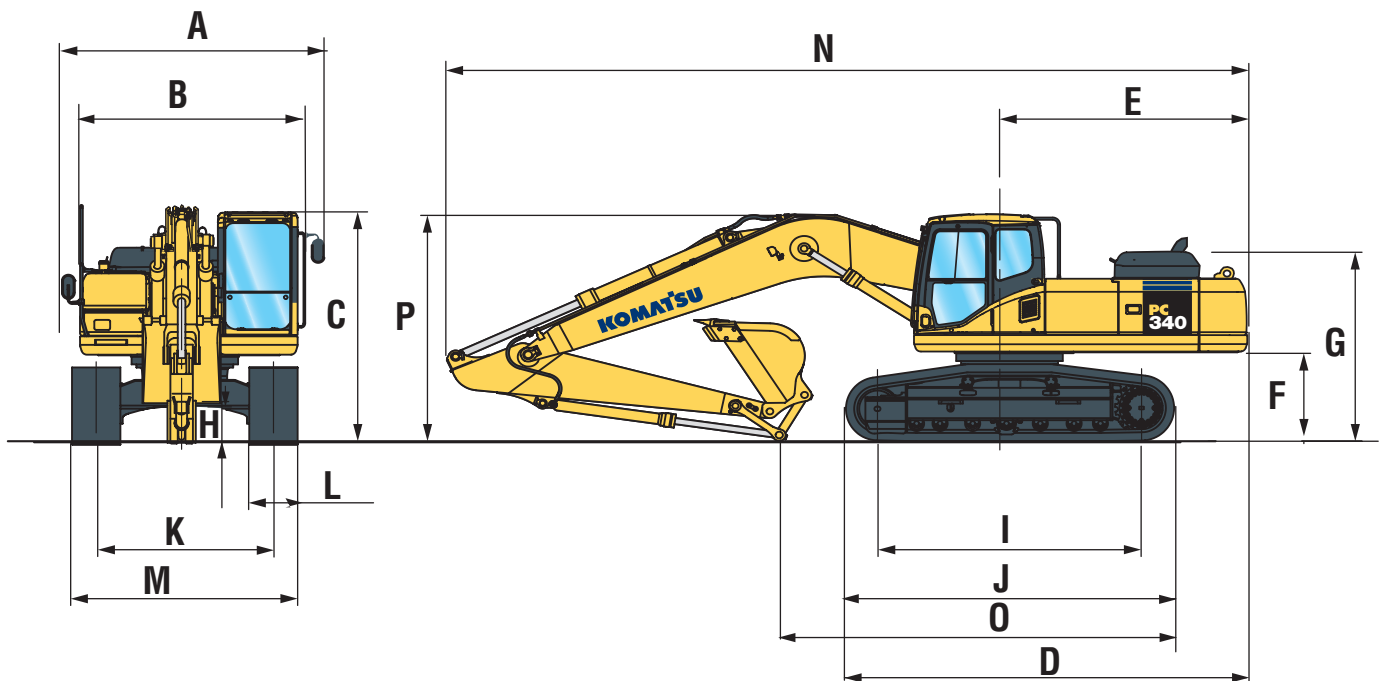
COOLANT AND LUBRICANT CAPACITY (REFILLING)

Fuel tank 605 ltr
 Radiator 32 ltr
 Engine 35 ltr
 Swing drive 13,4 ltr
 Hydraulic tank 188 ltr
 Final drive (each side) 8,5 ltr

MONO BOOM				
Triple grouser shoes	PC340LC-7		PC340NLC-6	
	Operating weight	Ground pressure	Operating weight	Ground pressure
600 mm	32.960 kg	0,63 kg/cm ²	32.860 kg	0,63kg/cm ³
700 mm	33.340 kg	0,54 kg/cm ²	-	-
800 mm	33.720 kg	0,48 kg/cm ²	-	-
850 mm	33.910 kg	0,48 kg/cm ²	-	-

MACHINE DIMENSIONS

MACHINE DIMENSIONS		PC340LC	PC340NLC
A	Overall width of upper structure with mirrors and handrail	3.397 mm	3.397 mm
B	Overall width of upper structure	2.995 mm	2.995 mm
C	Overall height of cab	3.130 mm	3.130 mm
D	Overall length of basic machine	5.882 mm	5.882 mm
E	Tail length.	3.405 mm	3.405 mm
	Tail swing radius	3.450 mm	3.450 mm
F	Clearance under counterweight	1.186 mm	1.186 mm
G	Machine tail height (top of engine cover)	2.580 mm	2.580 mm
H	Ground clearance	498 mm	498 mm
I	Track length on ground	4.030 mm	4.030 mm
J	Track length	4.955 mm	4.955 mm
K	Track gauge	2.590 mm	2.390 mm
L	Track shoe width	600, 700, 800, 850 mm	600, 700, 800, 850 mm
M	Overall track width with 600 mm shoe	3.190 mm	2.990 mm
	Overall track width with 700 mm shoe	3.290 mm	3.090 mm
	Overall track width with 800 mm shoe	3.390 mm	3.190 mm
	Overall track width with 850 mm shoe	3.440 mm	3.240 mm



Arm length	One-piece boom	2,2 m	2,5 m	3,2 m	4,0 m
N	Transport length	11.290 mm	11.180 mm	11.140 mm	11.170 mm
O	Length on ground (transport)	7.155 mm	6.760 mm	5.930 mm	5.475 mm
P	Overall height (to top of boom)	3.400 mm	3.410 mm	3.280 mm	3.760 mm



BUCKET OPTIONS & DIGGING FORCES

Specifications and equipment may vary according to regional availability

PC340LC-7 / PC340NLC-7

BUCKET AND ARM COMBINATION		Arm					
Bucket capacity (heaped) SAE, PCSA	Width without side cutters	Weight without side cutters	2,2 m	2,55 m	3,19 m	4,02 m	
0.60 m ³	600 mm	684 kg	○	○	○	○	
1.12 m ³	1000 mm	873 kg	○	○	○	○	
1.38 m ³	1200 mm	977 kg	○	○	○	○	
1.65 m ³	1400 mm	1062 kg	○	○	○	□	
1.79 m ³	1500 mm	1104 kg	○	○	○	□	
1.92 m ³	1600 mm	1166 kg	○	○	○	□	
2.12 m ³	1750 mm	1230 kg	○	○	○	△	
2.38 m ³	1800 mm	1450 kg	□	□	□	x	

Please consult with your distributor for the correct selection of buckets and attachments to suit the application. The recommendations are given as a guide only, based on typical operating conditions.

- Material weight up to 1.8 t/m³
- Material weight up to 1.5 t/m³
- △ Material weight up to 1.2 t/m³
- x Not usable.

Komatsu K VX Teeth



- For heavy duty applications Komatsu offers the Komatsu K VX bolt-on tooth system
- Self sharpening, reversible teeth made of Sagitta steel (>500 Brinell)
- Longer lifetime, less downtime, better penetration and improved loading capacity lead to increased efficiency and lower total cost per loaded tonne.

Komatsu Sharp Teeth



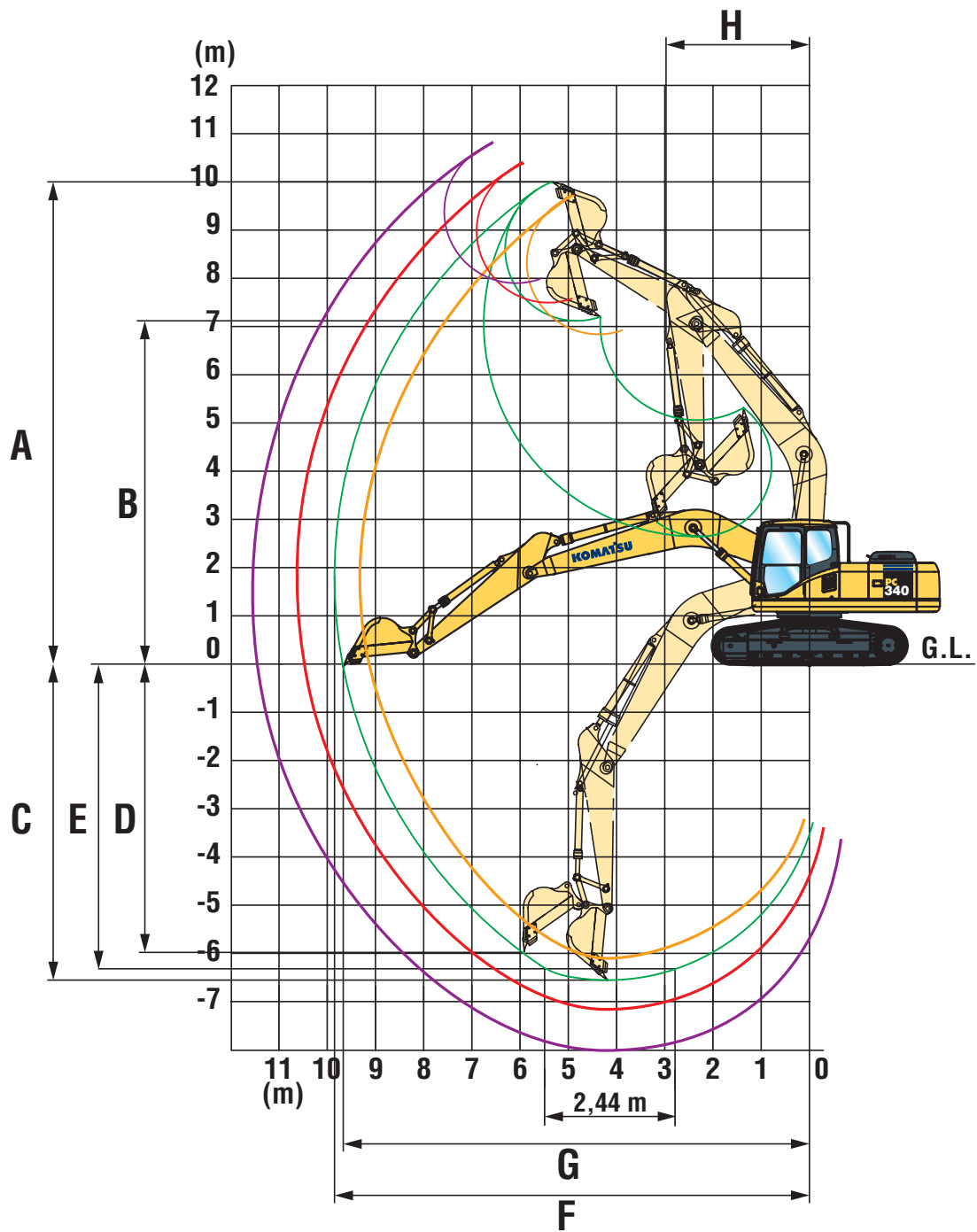
- The complete range of sharp teeth gives you excellent penetration power for all excavator models
- Self sharpening teeth ideal for compacted and frozen soils or sand with rocks
- Sharp corners are available to protect the bucket corners (will also ease the mount of grading blade on the bucket)

Besides the K VX and sharp teeth, Komatsu can offer you general purpose, penetration and abrasion teeth. All at a quality you can rely on.

BUCKET AND ARM FORCE				
Arm length	2,2 m	2,5 m	3,2 m	4,0 m
Bucket digging force	24.700 kg (242 KN)	24.700 kg (242 KN)	21.600 kg (212 KN)	21.600 kg (212 KN)
Bucket digging force at power max	26.400 kg (259 KN)	26.400 kg (259 KN)	23.100 kg (227 KN)	23.100 kg (227 KN)
Arm crowd force	22.400 kg (220 KN)	19.100 kg (187 KN)	16.300 kg (160 KN)	13.700 kg (134 KN)
Arm crowd force at power max.	24.000 kg (235 KN)	20.500 kg (201 KN)	17.400 kg (171 KN)	14.700 kg (144 KN)

WORKING RANGES

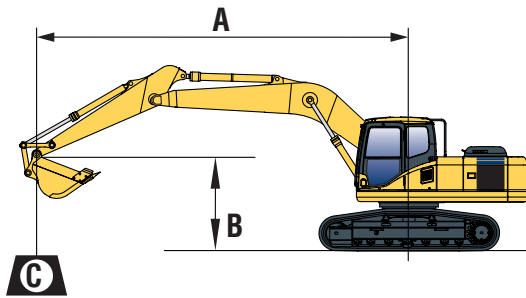
PC340LC/NLC-7



Arm length	2.200 mm	2.550 mm	3.190 mm	4.020 mm
A Max. digging height	9.580 mm	9.965 mm	10.210 mm	10.550 mm
B Max. dumping height	6.595 mm	6.895 mm	7.110 mm	7.490 mm
C Max. digging depth	6.355 mm	6.705 mm	7.380 mm	8.180 mm
D Max. vertical wall digging depth	5.120 mm	5.880 mm	6.480 mm	7.280 mm
E Max. digging depth of cut for 2.44 m level	6.130 mm	6.520 mm	7.180 mm	8.045 mm
F Max. digging reach	10.155 mm	10.550 mm	11.100 mm	11.900 mm
G Max. digging reach at ground level	9.950 mm	10.355 mm	10.920 mm	11.730 mm
H Min. swing radius	4.390 mm	4.400 mm	4.310 mm	4.320 mm

LIFTING CAPACITY

PC340LC-7 ONE-PIECE BOOM



- A – Reach from swing center
 - B – Bucket hook height
 - C – Lifting capacities, including bucket linkage (200 kg) and bucket cylinder (140 kg)
- Rating over front
 - Rating over side
 - Rating at maximum reach

When removing bucket, linkage or cylinder, lifting capacities can be increased by their respective weights

* Load is limited by hydraulic capacity rather than tipping. Ratings are based on SAE Standard No. J1097. Rated loads do not exceed 87% of hydraulic lift capacity or 75% of tipping load.

With 700 mm shoe

Arm length	A			7.5 m		6.0 m		4.5 m		3.0 m		1.5 m	

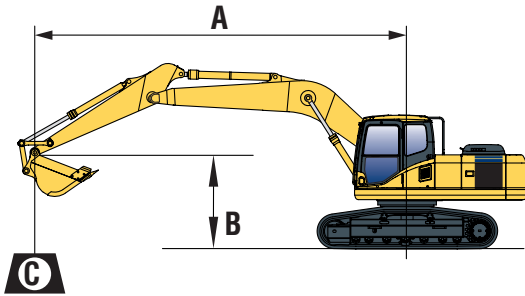
With 700 mm shoe 4000 mm 977 kg 1.38 m³	6.0 m	kg	*3700	3550										
	4.5 m	kg	*3750	3150	*6950	5950								
	3.0 m	kg	*3950	2900	*7800	56000	*9400	8200	*12300	*12300	*19450	*19450		
	1.5 m	kg	*4250	2800	*8600	5250	*10850	7550	*15100	11800	*8550	*8550		
	0.0 m	kg	*4750	2800	8400	4950	*11850	7050	*16650	10900	*8600	*8600		
	-1.5 m	kg	5200	3000	8200	4800	11700	6750	*16950	10500	*11450	*11450	*7250	*7250
	-3.0 m	kg	5800	3350	8100	4700	11550	6650	*16150	10450	*15600	*15600	*11000	*11000
	-4.5 m	kg	*6650	4100	*8050	4750	*10700	6700	*14300	10600	*20050	*20050	*15350	*15350

With 700 mm shoe 3200 mm 977 kg 1.38 m³	6.0 m	kg	*4900	4250	*7150	6000								
	4.5 m	kg	*5000	3700	*7700	5750	*8950	8500						
	3.0 m	kg	*5300	3400	*8450	5450	*10350	7900	*13900	12200				
	1.5 m	kg	5550	3250	8600	5200	*11600	7350	*16350	11350				
	0.0 m	kg	5650	3300	8350	4950	11950	6950	*17150	10750	*7850	*7850		
	-1.5 m	kg	6100	3550	8200	4800	*11700	6800	*16750	10600	*12650	*12650	*8850	*8850
	-3.0 m	kg	6950	4100	8200	4800	*11500	6750	*15300	10650	*18500	*18500	*13600	*13600
	-4.5 m	kg	*7250	5250			*9550	6950	*12650	10950	*16750	*16750		

With 700 mm shoe 2550 mm 977 kg 1.38 m³	6.0 m	kg	*6900	4850	*7800	5900							
	4.5 m	kg	6850	4150	*8300	5700	*9800	8350	*12600	*12600			
	3.0 m	kg	6350	3800	8900	5450	*11100	7750	*15350	12000			
	1.5 m	kg	6200	3700	8600	5200	*12100	7300	*17050	11050			
	0.0 m	kg	6350	3750	8400	5000	11900	6950	*17150	10700			
	-1.5 m	kg	6900	4100	8300	4900	11800	6850	*16200	10650	*13350	*13350	
	-3.0 m	kg	*7850	4800	*8200	5000	*10750	6700	*14300	10850	*18400	*18400	
	-4.5 m	kg	*7350	6500			*8250	7200	*11000	*11000	*13650	*13650	

With 700 mm shoe 2200 mm 977 kg 1.38 m³	6.0 m	kg	*8000	5400	*8150	5800	*9100	8650					
	4.5 m	kg	7500	4600	*8550	5600	*10150	8200	*13250	13000			
	3.0 m	kg	6900	4150	8800	5350	*11350	7650	*15900	11650			
	1.5 m	kg	6700	4000	8550	5100	11900	6950	*17150	10800			
	0.0 m	kg	6900	4100	8350	4950	11850	6900	*16850	10550			
	-1.5 m	kg	7550	4500	8300	4900	11750	6800	*15650	10600	*15300	*15300	
	-3.0 m	kg	*8350	5400			*10350	6750	*13500	10850	*16500	*16500	
	-4.5 m	kg	*7700	*7700					*9850	*9850	*11600	*11600	

PC340NLC-7 ONE-PIECE BOOM



- A – Reach from swing center
- B – Bucket hook height
- C – Lifting capacities, including bucket linkage (200 kg) and bucket cylinder (140 kg)

- Rating over front
- Rating over side
- Rating at maximum reach

When removing bucket, linkage or cylinder, lifting capacities can be increased by their respective weights

* Load is limited by hydraulic capacity rather than tipping. Ratings are based on SAE Standard No. J1097. Rated loads do not exceed 87% of hydraulic lift capacity or 75% of tipping load.

With 600 mm shoe

Arm length	A	B			7.5 m		6.0 m		4.5 m		3.0 m		1.5 m	

With 600 mm shoe 4000 mm 977 kg 1.38 m ³	6.0 m	kg	*3700	3150										
	4.5 m	kg	*3750	2750	*6950	5400								
	3.0 m	kg	*3950	2550	*7800	5050	*9400	7400	*12300	11800	*19450	*19450		
	1.5 m	kg	*4250	2450	8600	4700	*10850	6750	*15100	10500	*8550	*8550		
	0.0 m	kg	*4750	2450	8250	4400	11850	6250	*16650	9650	*8600	*8600		
	-1.5 m	kg	5100	2600	8050	4200	11500	5950	*16950	9250	*11450	*11450	*7250	*7250
	-3.0 m	kg	5700	2950	7950	4150	11400	5850	*16150	9200	*15600	*15600	*11000	*11000
	-4.5 m	kg	*6650	3600	8050	4200	*10700	5950	*14300	9350	*20050	18950	*15350	*15350

With 600 mm shoe 3200 mm 977 kg 1.38 m ³	6.0 m	kg	*4900	3800	*7150	5400								
	4.5 m	kg	*5000	3250	*7700	5200	*8950	7700						
	3.0 m	kg	*5300	3000	*8450	4900	*10350	7100	*13900	10900				
	1.5 m	kg	5450	2850	8450	4600	*11600	6600	*16350	10050				
	0.0 m	kg	5550	2900	8200	440	11750	6200	*17150	9500	*7850	*7850		
	-1.5 m	kg	5950	3150	8100	4250	*11500	6000	*15300	9400	*18500	*18500	*8850	*8850
	-3.0 m	kg	6850	3600	8100	4250	*11500	6000	*15300	9400	*18500	*18500	*13600	*13600
	-4.5 m	kg	*7250	4700			*9550	6150	*12650	9650	*16750	*16750		

With 600 mm shoe 2550 mm 977 kg 1.38 m ³	6.0 m	kg	*6900	4350	*7800	5350								
	4.5 m	kg	6700	3750	*8300	5150	*9800	7550	*12600	12000				
	3.0 m	kg	6250	3400	8750	4900	*11100	7000	*1535	10700				
	1.5 m	kg	6050	3250	8600	4600	12100	6500	*17150	9450				
	0.0 m	kg	6250	3300	8400	4450	11750	6200	*17150	9450				
	-1.5 m	kg	6750	3600	8300	4350	11600	6100	*16200	9400	*13350	*13350		
	-3.0 m	kg	*7850	4300	*8200	4450	*10750	5950	*14300	9600	*18400	*18400		
	-4.5 m	kg	*7350	5800			*8250	6400	*11000	9950	*13650	*13650		

With 600 mm shoe 2200 mm 977 kg 1.38 m ³	6.0 m	kg	*8000	4900	*8150	5250	*9100	7850						
	4.5 m	kg	7350	4100	*8550	5050	*10150	7400	*13250	11700				
	3.0 m	kg	6750	3700	8800	4800	*11350	6850	*15900	10350				
	1.5 m	kg	6600	3550	8550	4550	11750	6200	*17150	9550				
	0.0 m	kg	6750	3600	8350	4400	11650	6100	*16850	9300				
	-1.5 m	kg	7400	3950	8300	4350	11550	6050	*15850	9350	*15300	*15300		
	-3.0 m	kg	*8350	4800			*10350	6000	*13500	9600	*16500	*16500		
	-4.5 m	kg	*7700	6900					*9850	*9850	*11600	*11600		

CRAWLER EXCAVATOR



STANDARD EQUIPMENT

Standard and optional equipment may vary. Consult your Komatsu dealer for more information.

- Komatsu SAA6D114E-2 180kW direct injection emissionised stage II intercooled turbo charged diesel engine.
- Double element type air-cleaner with dust indicator and auto-dust evacuator.
- Suction type cooling fan with radiator fly screen.
- Automatic fuel line de-aeration
- Engine key stop
- Alternator, 24 Volt 60 ampere
- Batteries, 2x12 Volt 140Ah
- Starter motor, 24 Volt 11 kW
- Electronic closed-centre load sensing (E-CLSS) hydraulic system (HydrauMind).
- Pump and engine mutual control (PEMC) system
- Multi function colour monitor with equipment management monitoring system (EMMS)
- 4-working mode selection system; Active mode, economy mode, breaker mode and lifting mode
- In-line filter for hydraulics.
- Standard counterweight
- Standard colour scheme and decals
- Power-Max function
- Auto-deceleration function.
- 2-mode boom control setting.
- Automatic engine warm-up system.
- Engine overheat prevention system.
- Fuel control dial.
- Adjustable PPC wrist control levers with 3 button controls for arm, boom, bucket and swing.
- PPC control levers and pedals for steering and travel.
- One additional 2-way proportional service valve. (full flow)
- Hydrostatic, 3-speed travel system with automatic shift and planetary gear type final drives, and hydraulic travel and parking brakes.
- SpaceCab™ ; Highly pressurized and tightly sealed viscous mounted cab with tinted safety glass windows, opening roof hatch with window pull-up type front window with locking device, removable lower window, front window wiper with intermittent feature, ashtray, luggage box, floor mat
- Track roller guards
- Parts book and operator manual
- Lockable fuel cap and covers.
- Remote greasing for swing circle and pins
- Fuel supply pump
- Track frame under-guards
- 12 Volt power supply
- Overload warning device
- Boom safety valves
- Large handrails and rear-view mirrors
- Cigarette lighter
- Radio cassette preparation.
- Beverage holder and magazine rack
- Electrical horn
- Climate control/Airconditioning
- Hot and cool box.
- Cap, overall
- Toolkit and spare parts for first service.
- Lights; 2 revolving frame lights and 1 boom light
- Suspension seat with adjustable arm rests and retractable seat belt.
- Engine ignition can be password secured on request.

OPTIONAL EQUIPMENT

- LC and NLC undercarriages
- 600, 700, 800, 850mm triple grouser track-shoes
- Mono boom
- 2,2 m, 2,5 m, 3,2 m, 4,0 m arms
- Automatic greasing system
- Additional hydraulic circuits
- Arm safety valve
- Additional cab roof lights
- Rain visor
- Komatsu buckets
- Heated air suspension seat
- Full length track roller guards
- Radio-Cassette
- Service points
- Beacon preparation
- Bio oil
- OPG top guard
- OPG front guard



Komatsu Europe International NV

Mechelsesteenweg 586
 B-1800 VILVOORDE (BELGIUM)
 Tel. +32-2-255 24 11
 Fax +32-2-252 19 81
 www: komatsueurope.com