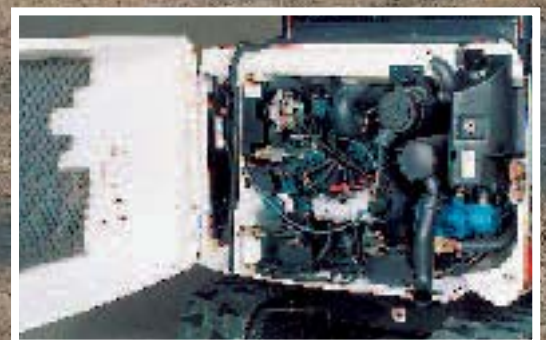




Bobcat®

328



IR Bobcat



Operating weight	Canopy	Cab
- with rubber tracks	2939 kg	3058 kg
- with steel tracks	3005 kg	3124 kg
Travel speed	0 - 1.9 km/h and 0 - 3.1 km/h	
Engine	20.5 kW (27.5 HP)	
Breakout force (over bucket cylinder)	2120 daN	
Transmission Drawbar Pull	2437.6 daN	
Maximum depth	3669 mm	



GENERAL INFORMATION

Operating weight	canopy	cab
-with rubber tracks	2939 kg	3058 kg
-with steel tracks	3005 kg	3124 kg
Travel speed	0 - 1.9 / 0 - 3.1 km/h	
Controls:		
Vehicle	Two hand levers / foot pedals for control of speed and direction	
Excavator function	Two hydraulic joysticks control dipperstick, bucket, boom and slew. Separate hand controls blade. Right foot control for boom offset. Right hand thumb switch control for two-way auxiliary hydraulics.	



ENGINE

Make	Kubota
Model	D 1703 B
Fuel	Diesel
Power (ISO 9249)	20.5 kW (27.5 HP) @ 2200 RPM
Displacement	1.647 l
Maximum torque (DIN 6270 B)	101.5 Nm @ 1600 RPM
Number of cylinders	3
Bore x stroke	87 x 92.4 mm
Cooling system	Water
Starter	12 Volt, 1.4 kW
Alternator	12 Volt, 40 Amp.



SLEW SYSTEM

Slew drive	Radial piston motor with brake
Slew circle	Single row shear type ball bearings with internal gear
Slew speed	9.18 RPM Max.
Boom swing	
- left	90°
- right	50°



BREAKOUT FORCE (ISO)

Over dipperstick cylinder	1047.3 daN
Over bucket cylinder	2120 daN



HYDRAULIC SYSTEM

Pump type	Dual outlet variable displacement pump with gear pump
Capacity	2 x 19.8 l/min + 1 x 26.6 l/min
Auxiliary flow	46.4 l/min at 2200 RPM
System relief setting	17237 kPa
Implement circuits (auxiliary)	17237 kPa
Control valves	10 spool



TRANSMISSION

Final drive	Each track independently driven by axial piston motor
Gradeability	58 % / 30°
Drawbar Pull	2437.6 daN



BRAKES

Travel	Hydraulic lock in motor circuit
Slew	Spring applied, hydraulically released



UNDERCARRIAGE

Width of rubber (steel) track	320 mm (300 mm)	
Number of track rollers	3 each side	
Ground pressure	Rubber/Canopy	Rubber/Canopy
	28.4 kPa	29.1 kPa

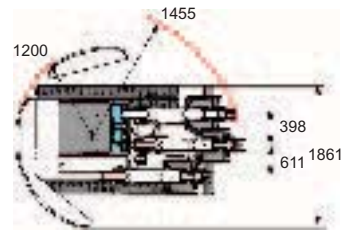
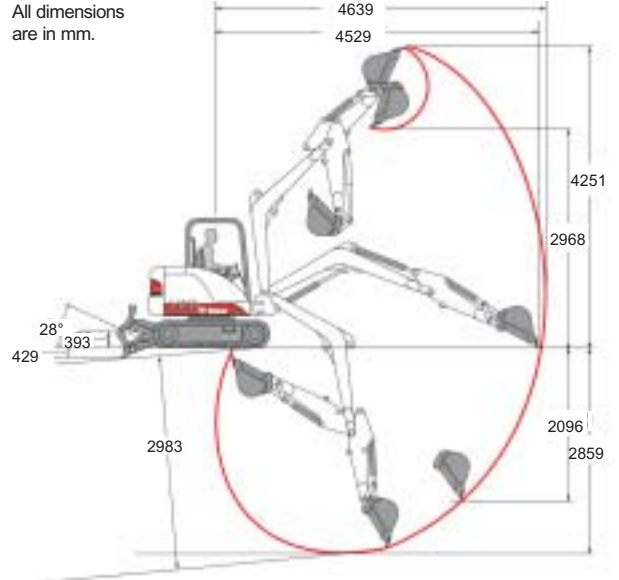


CAPACITIES

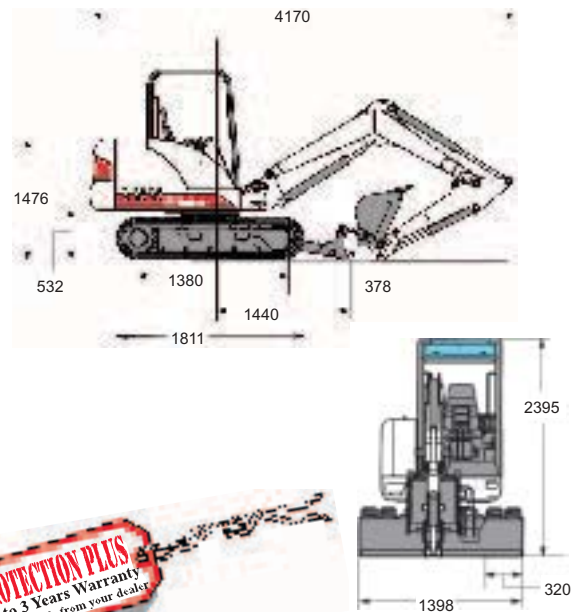
Fuel tank	53.3 l
Cooling system	5.2 l
Engine oil & filter	5.7 l
Hydraulic tank	18.2 l
Hydraulic system capacity	36.0 l

WORKING RANGE

All dimensions are in mm.



DIMENSIONS



BOBCAT EUROPE
 J. Huysmanslaan, 59 - B - 1651 LOT Belgium
 ☎ +32 (0)2 371 68 11 - Fax +32 (0)2 371 69 59